



ADVENSER

PARTNERS IN ENGINEERING EXCELLENCE

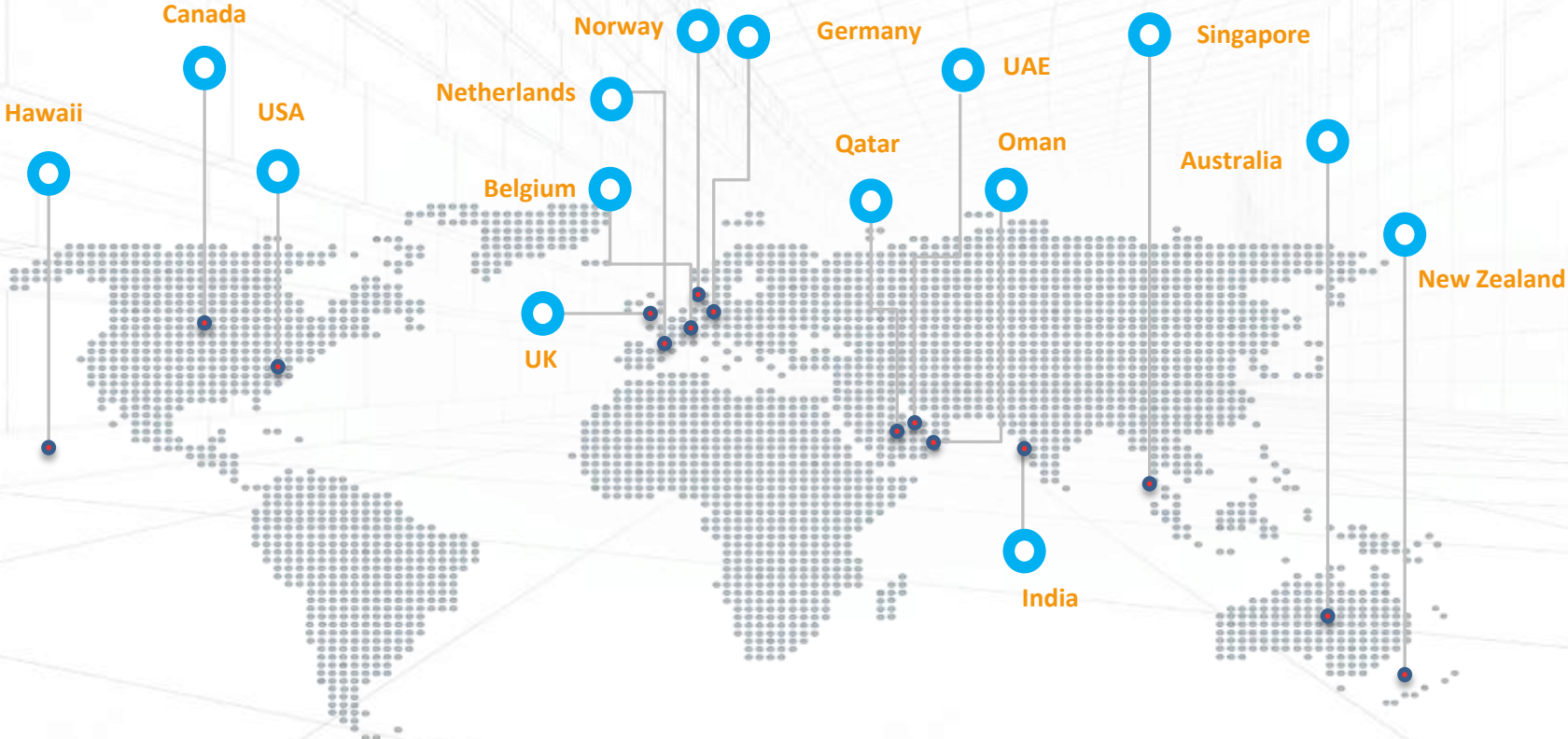
COMPANY OVERVIEW

Advenser is a multi-disciplined engineering company delivering advanced engineering services & solutions to the construction industry through innovative practices, utilizing BIM and advanced technological tools. With over a decade of experience in the AEC industry, we have an impressive track record, successfully delivering a range of complex projects across multiple countries.

Our engineering team, with a workforce of more than 200 Engineers with Architectural, Structural and MEP experience, have the expertise and skillsets to meet the demands of any complex project anywhere in the world. We streamline our services to match & adapt to their constantly evolving needs. Systematic knowledge sharing and perfection of the work process is an ongoing process in Advenser.



CLIENT LOCATIONS



WHAT MAKES US UNIQUE

“Development, management & streamlining of integrated multi-disciplinary performance models of projects & products”



Comprehensive Solutions

Comprehensive BIM services for architectural, structural, MEP trades under one umbrella



End to End Service

Services that span the complete project life cycle from design to maintenance



Global Experience

Global track record across North America, Europe & Australasia



Trade Knowledge & Expertise

Expert resources with multinational project experience & trade knowledge



Quality Standards

Fool proof QC & performance auditing based on customer feedback



Global Operations

Sales Offices & operation in multiple countries



WHERE ARE WE NOW

“ From humble beginnings, we have now grown and risen to be one of the most prominent global engineering services providers by setting the highest standards for our conduct and reputation in everything we do. ”

Clients spanning across 17 countries with projects experience in over 4 continents

Multi-disciplines engineering departments for Architecture, Mechanical, MEP, Façade, Precast, Steel & Rebar

Exceptional team of over 200 engineers with a diverse array of perspectives, talents, business experience and technical expertise

An umbrella of diverse services and solutions for all stages of a project from design through construction to facility management

Diverse experience portfolio in residential, commercial, industrial, healthcare and educational projects

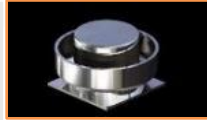
Around 4000 projects from over 700 clients

SERVICES

1 Architectural Modeling



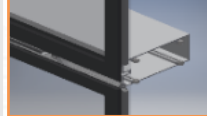
2 BIM Object Libraries



3 Comprehensive BIM



4 Façade Detailing



5 Infrastructure BIM



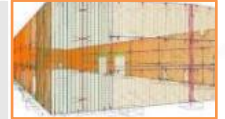
6 Industrial Engineering



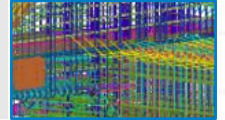
7 MEP Coordination



8 Precast Detailing



9 Rebar Detailing



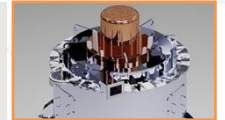
10 Scan to BIM



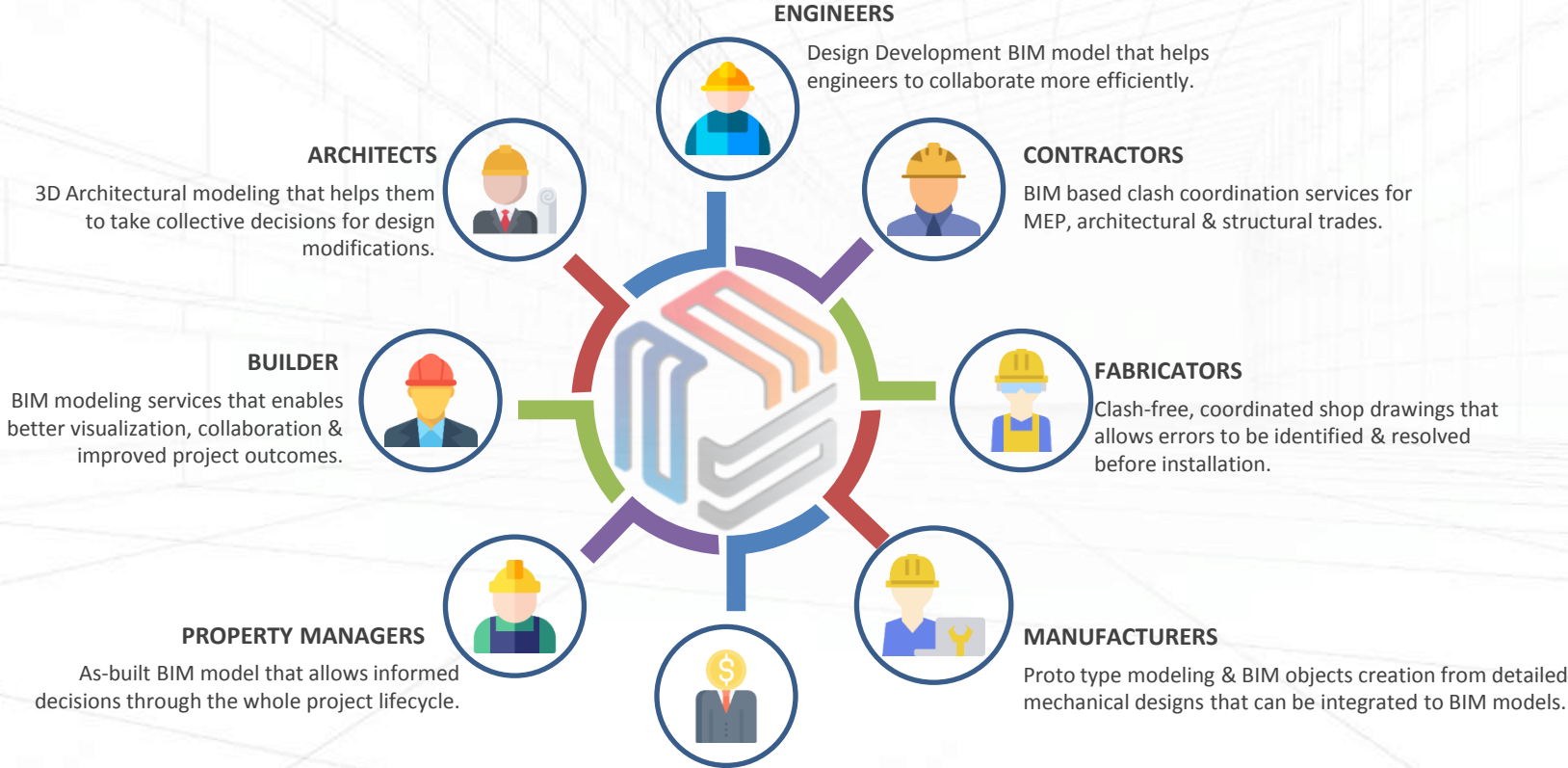
11 Steel Detailing



12 Mechanical CAD/CAM



ADVENSER IN BIM SUPPLY CHAIN



ARCHITECTURAL MODELING

1. Architectural BIM

2. Shop Drawing Creation

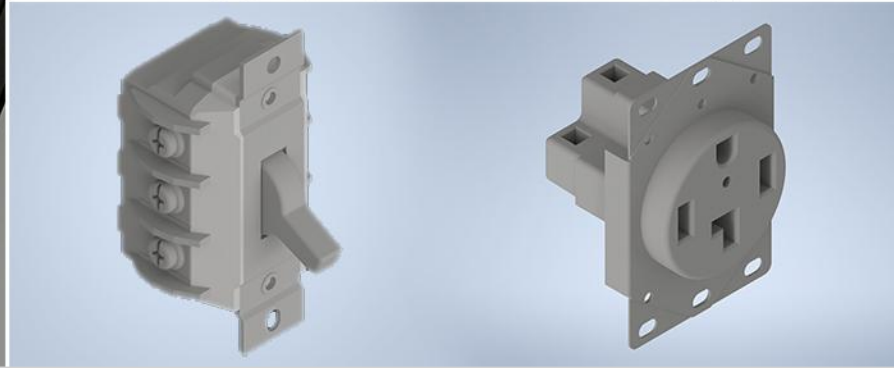
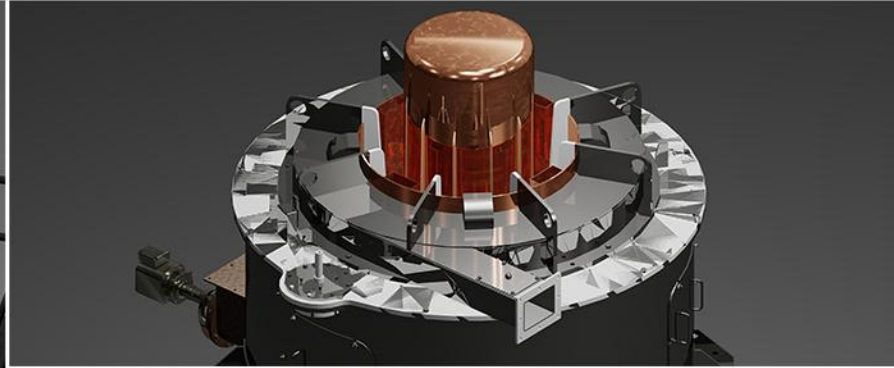
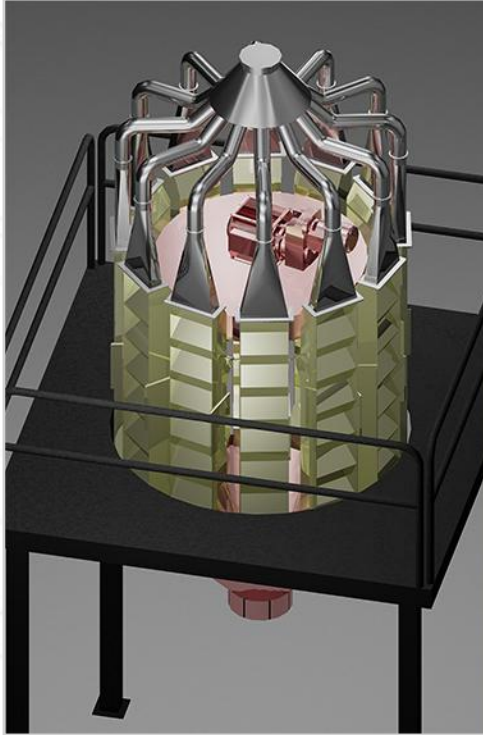
3. Design Development

4. Construction Documentation

5. Point Cloud Modeling



MECHANICAL CAD/CAM



"Our core expertise lies in providing 2D drafting & CAD 3D modeling services to clients for the fabrication & manufacturing of mechanical components."

1. Shop Drawings

2. Fabrication Drawings

3. Assembly Drawings

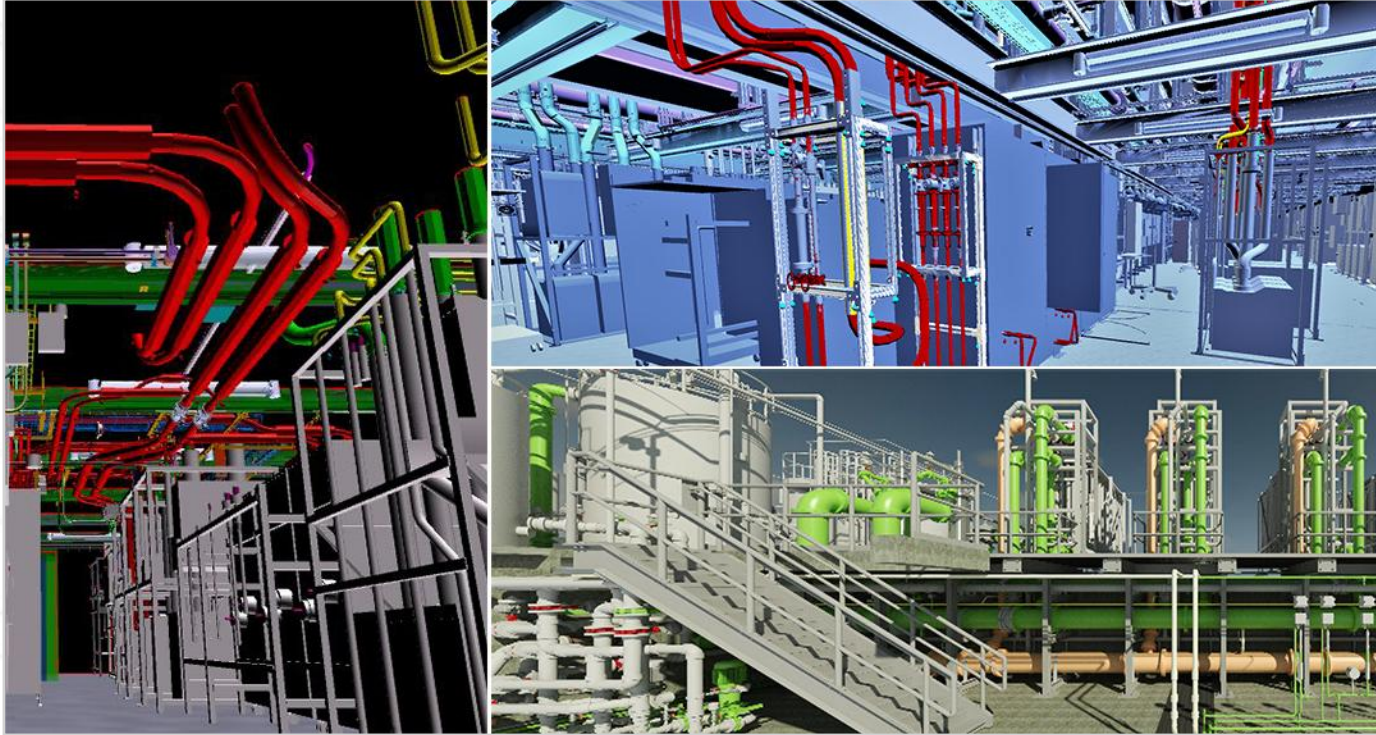
4. Sheet Metal Drawings

5. Isometric Drawing

6. Parametric Modeling

7. 3D Solid Modeling

INDUSTRIAL ENGINEERING



"Our team create intelligent 3D models for site preparation, structural design and detailing, building design, piping and equipment layout. Enhance and integrate multidisciplinary collaboration and minimize data loss across your project."

1. Process Piping drawings

2. Bill of material

3. Isometric drawings

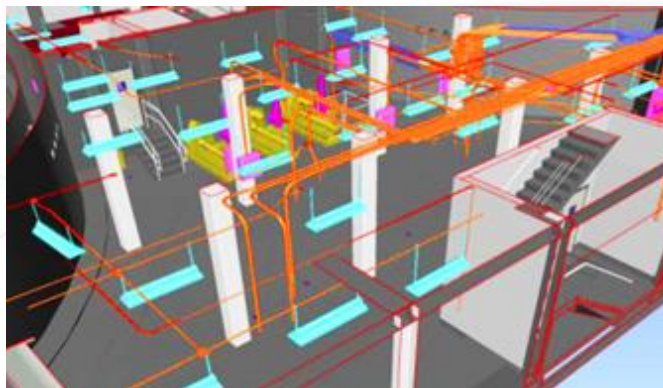
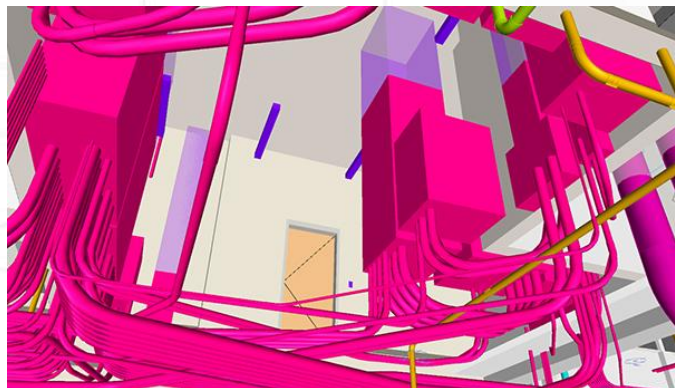
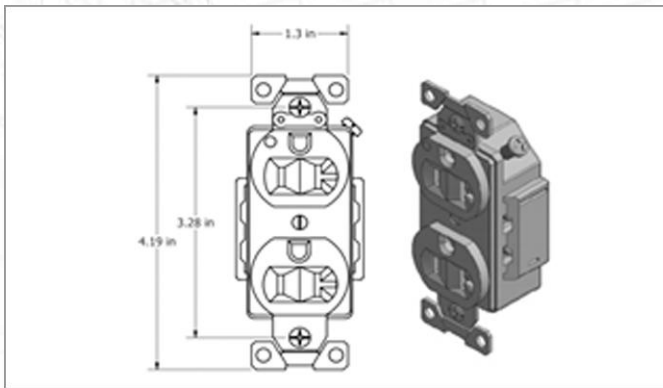
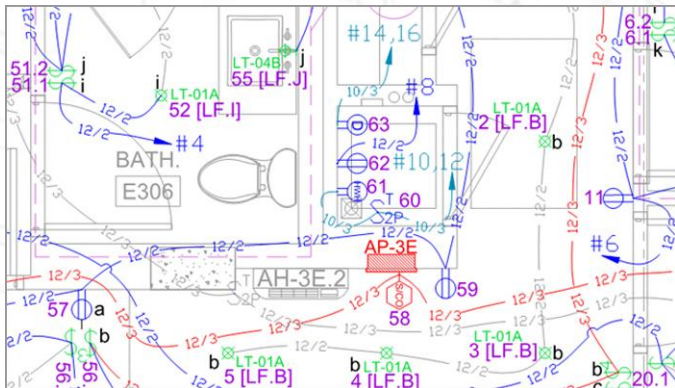
4. P & ID diagrams

5. Schematic Drawings

6. As-Built documentation

7. Collision Checking

ELECTRICAL ENGINEERING



Our team of Electrical engineers are proficient in drafting and detailing in all segments of Electrical projects from Conceptual phase to Installation phase.

1. Power & Lighting system Shop drawing

2. ELV & Fire Alarm Shop drawing

3. Prefabrication drawing generation

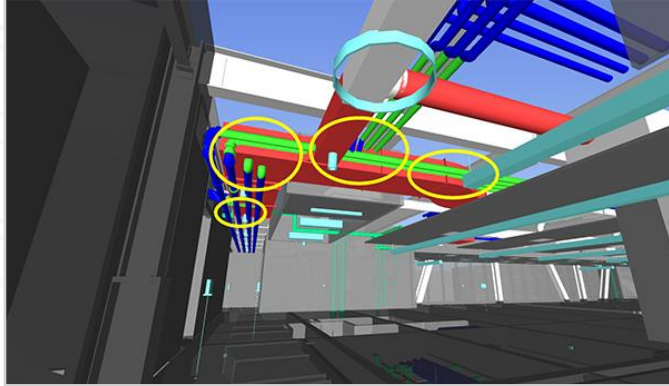
4. Wire/Device data extraction

5. Containment layout creation

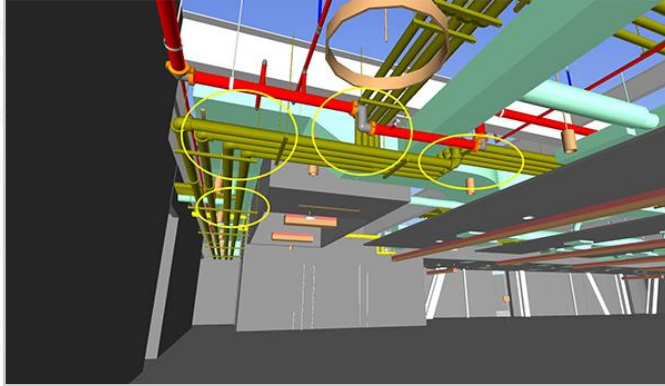
6. Schematic diagram preparation

CLASH DETECTION & RESOLUTION

Before coordination



After coordination

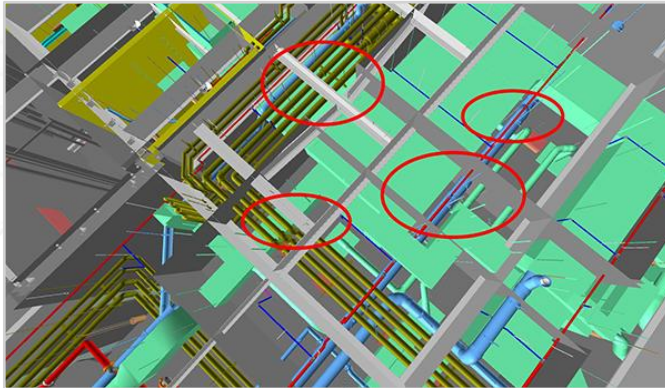
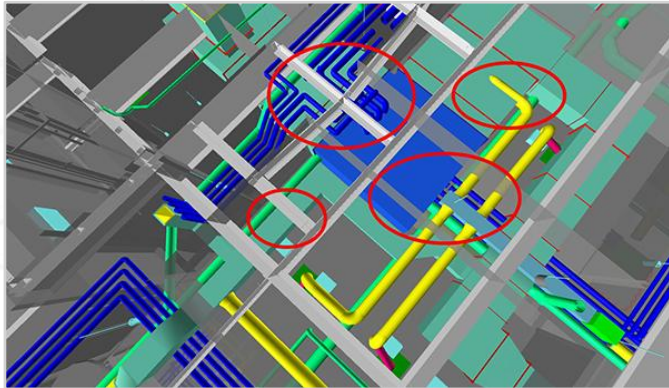


“Seamless coordination of MEP with Architecture & Structural trades, allowing all systems to work in perfect synchronization and at the same time maintaining the design intent.”

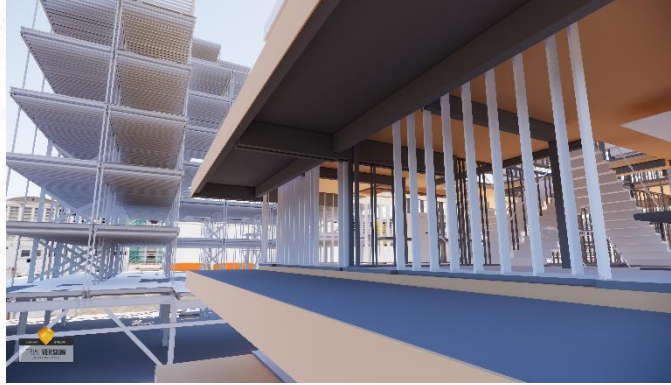
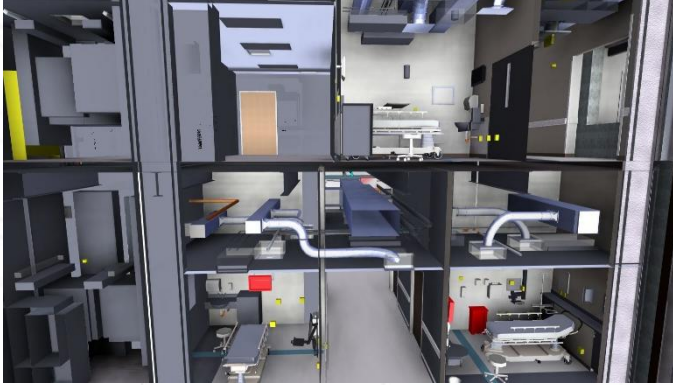
1. Architectural BIM

2. Resolution of Clashes

3. Online Coordination Meetings



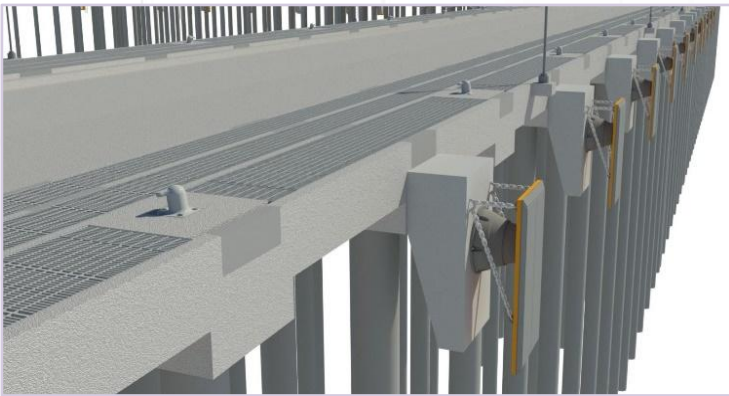
INTEGRATED BIM PROJECT DELIVERY



"Helping organizations leverage the potentials of BIM integrating architectural, structural, mechanical & plumbing systems."

1. Architectural BIM
2. Structural 3D Modeling
3. HVAC & Plumbing Modeling
4. BIM Clash Coordination
5. Fabrication Shop Drawings

INFRASTRUCTURE BIM



“Integrated approach to model multi-disciplined trades for utility structures, power station, water treatment plants, highways & bridges”

1. Bridge Information Modeling

2. BIM for Water treatment Plants

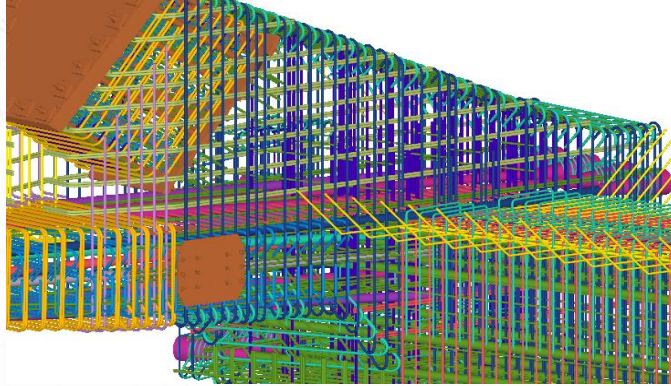
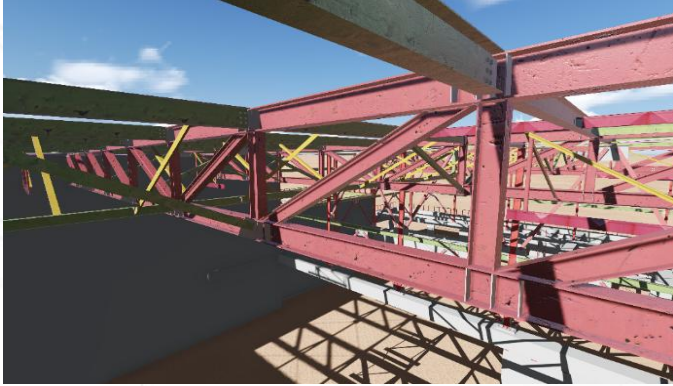
3. Landscape & Site Modeling

4. Tunnel Information Modeling

5. Marine/Offshore structures

6. BIM for Transportation

STEEL, PRECAST & REBAR DETAILING



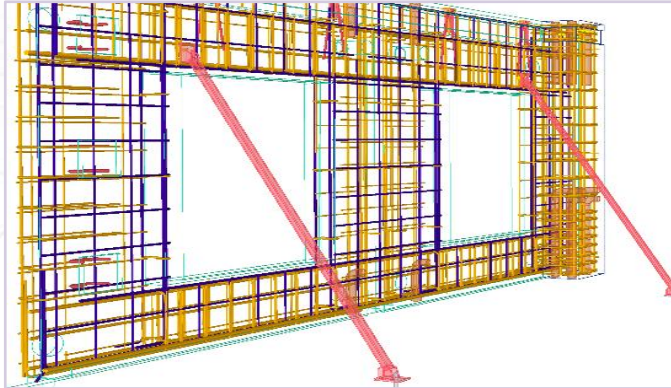
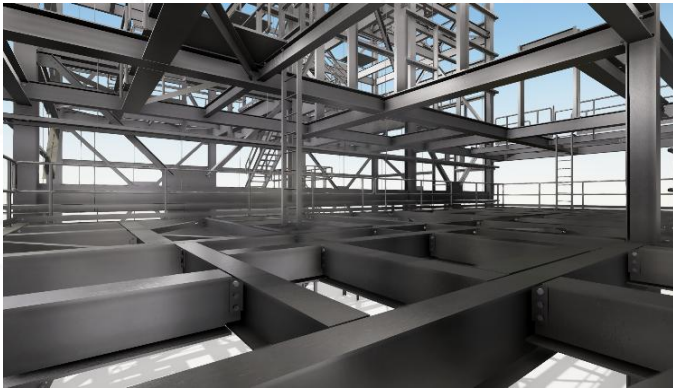
“Seamless coordination of MEP with Architecture & Structural trades, allowing all systems to work in perfect synchronization and at the same time maintaining the design intent.”

1. Structural Steel Detailing

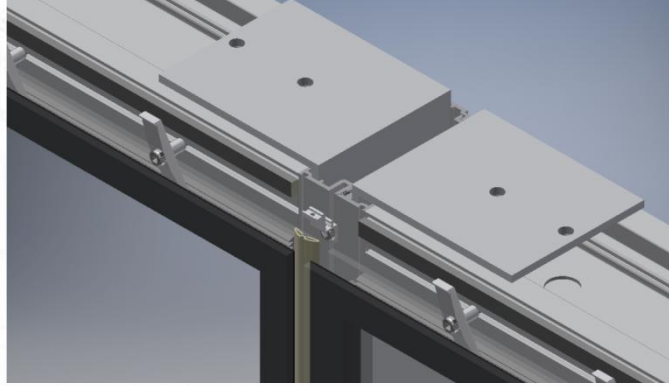
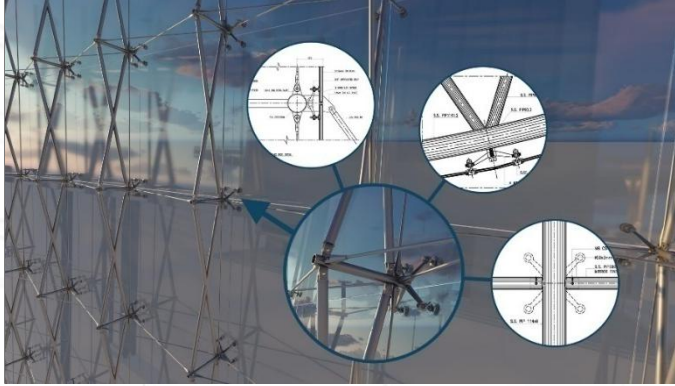
2. Precast Detailing

3. Rebar Detailing, Bar Bending List

4. Concrete Detailing



OUR FAÇADE ENGINEERING SERVICES



“Accurate shop & fabrication drawings enable clients to plan for optimized & balanced production of building envelope systems.”

1. Curtain Walls

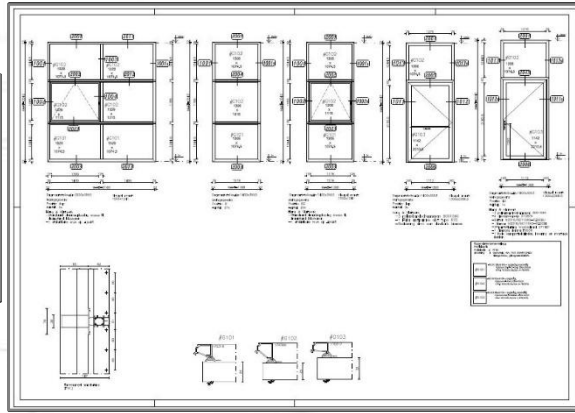
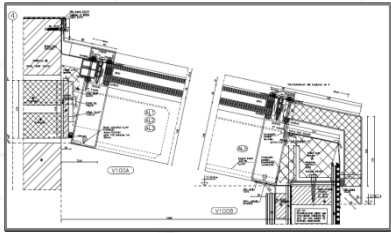
2. Spider Glazing

3. Shop Fronts & Frameless Glass

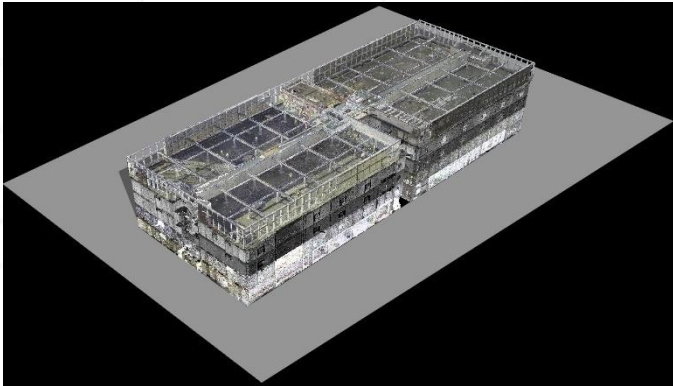
4. Metal Panels & Hand Rails

5. Sky Lighting & Canopies

6. Windows, Sliding/Partition Doors



POINTCLOUD SCAN TO BIM MODELING



“The 3D BIM model that we create from laser scan data serve as accurate models for as-built purposes as well as for Retrofit, Refurbishment and Renovation projects.”

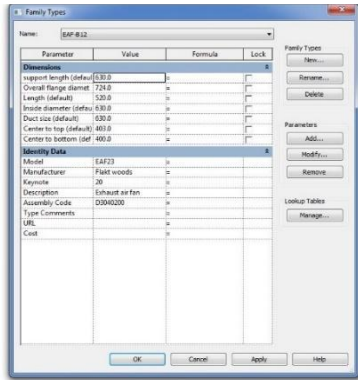
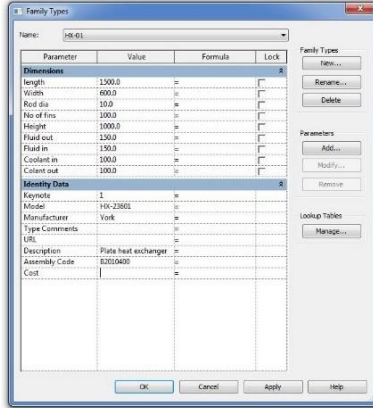
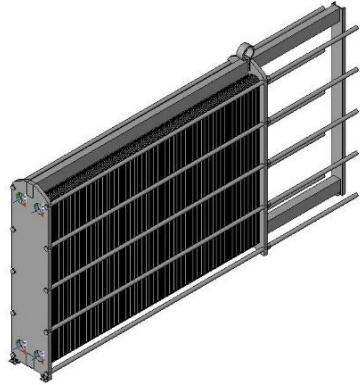
1. Architectural Conversion

2. Structural Conversion

3. MEP Conversion

4. Industrial Conversion

REVIT FAMILY CREATION



“Creation of standard and customized Revit families for the retail, manufacturing and the construction industry from the manufacturer’s submittals or even hand sketches.”

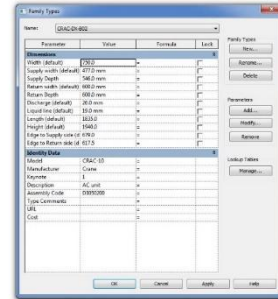
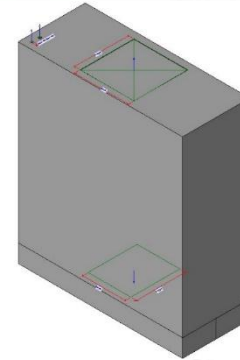
1. Architectural Elements

2. Structural Components

3. Mechanical Fittings

4. Plumbing Fixtures

5. Product Libraries



BIM CONSULTING SERVICES

Since **2007**, we have been assisting construction companies, general & specialty contractors in their migration to BIM from CAD. We act as a strategic BIM partner to the client educating and training them for seamless migration from CAD drafting to BIM implementation.

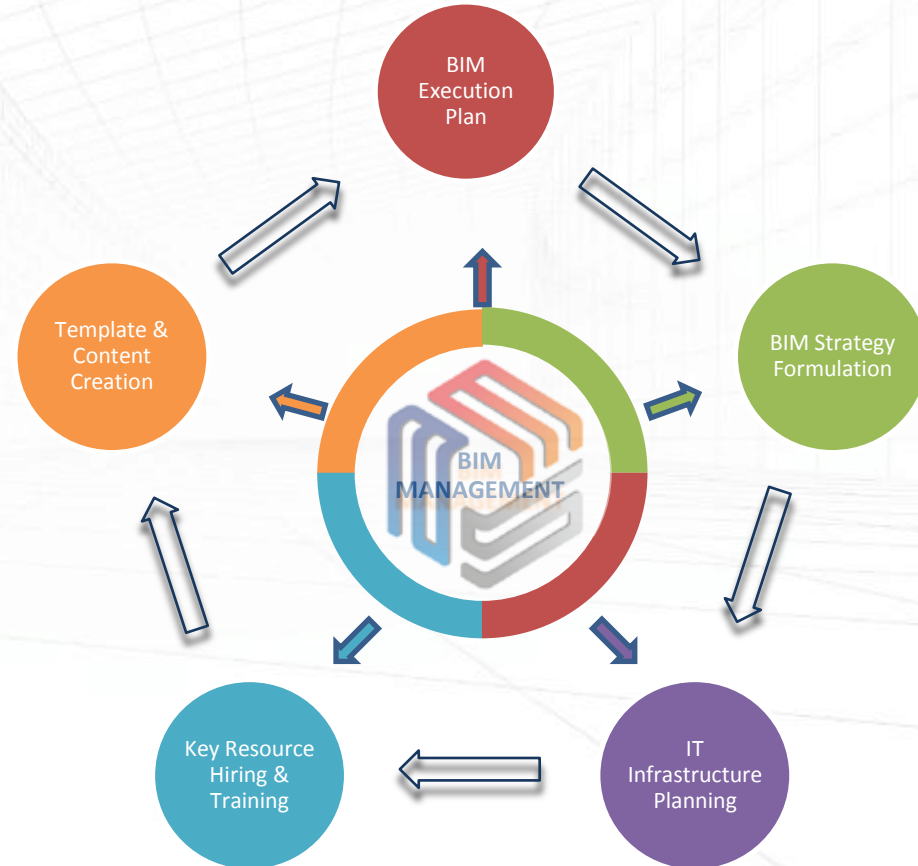
1. BIM Model Audit

2. Offshore BIM Team

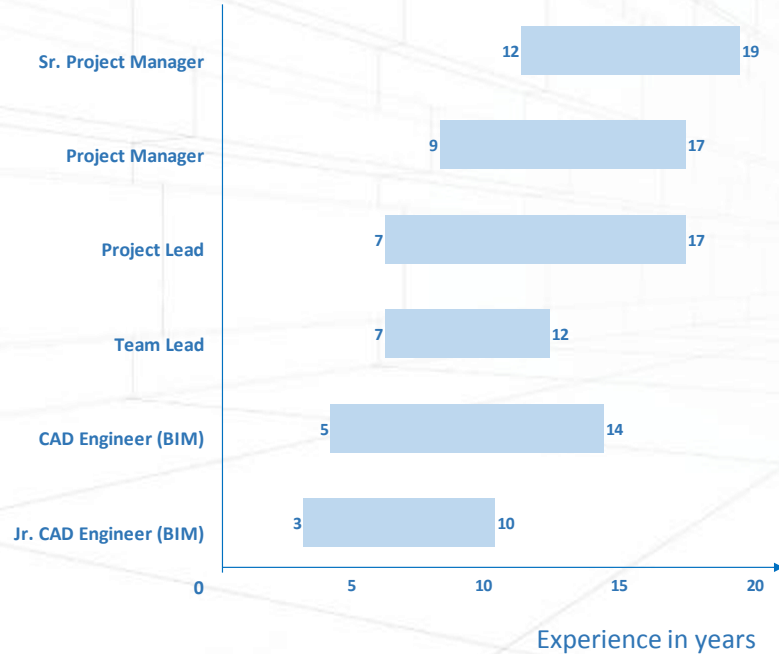
3. BIM Implementation Planning

4. BIM Training

5. On-Site BIM Support



TEAM PROFICIENCY & SOFTWARE PROFICIENCY



- Civil 3D
- FormIt Pro
- Construction Cloud
- InfraWorks
- Insight
- MagiCAD
- Revit
- 3ds Max
- LogiKal
- ReCap Pro
- Inventor
- Tekla
- AutoCAD MEP
- Fabrication CADmep
- STAAD.Pro
- Autodesk Docs
- Advance Steel
- Solid Edge
- Navisworks Manage
- AutoCAD Plant 3D
- RebarCAD
- Dynamo
- BIM Collaborate Pro
- RGS REBAR
- Trimble EC CAD, Field Technology
- Building Data
- Rhinoceros
- RAM Connection

CONTACT US

ADVENSER Technology Services, Inc.

Five Neshaminy Interplex, STE 205
Trevose, PA 19053, USA

Ph: +1 (215) 934 2868
+1 (215) 791 7955

 info@advenser.com

ADVENSER LLC

5 Neshaminy Interplex, Suite 205
Trevose, PA 19053, USA

Ph: +1 (804) 859 2002
(215) 666 6082

 info@advenser.com

ADVENSER Engineering Services Pvt Ltd.

43 A, E block, CSEZ, Kakkanad
Kochi, Kerala, India. Pin 682 037
Ph: +91 484 298 8448; +91 944 725 1177

Lulu Cyber Tower
Infopark campus, Kochi, Kerala

 www.advenser.com

ADVENSER Engineering Systems LLC

PO Box No:118901,
Dubai, UAE

Ph: +971 50 237 7430

 [Corporate video](#)

ADVENSER Engineering Services Pty. Ltd.

Suite 2, Ground Floor, 651 Doncaster Road
Doncaster VIC 3108, Australia

Ph: +61 363 877 090

 [LinkedIn](#)

THANK YOU!

